

The Intelligence Tracking System has been developed to operate on Microsoft Windows 95, 98, ME, NT, 2000, or XP. Hardware requirements vary depending on the amount of data you will be collecting in the Intelligence Tracking System, however a good starting point has been outlined below.

| <u>Workstation</u> | | <u>Server</u> | |
|--------------------|---|---------------|--|
| Processor: | Intel Pentium 200Mhz | Processor: | Intel Pentium II 300Mhz |
| Ram Memory: | 64MB | Ram Memory: | 256MB |
| Hard Disk: | 2GB | Hard Disk: | 5GB |
| Video: | Thousands of colors at 800x600dpi | Video: | Thousands of colors at 800x600dpi |
| Input: | Scanner, Digital Camera | Input: | Scanner, Digital Camera |
| Output: | Inkjet or Laser Printer | Output: | Inkjet or Laser Printer |
| OS: | Windows 95, 98, ME, NT, 2000, XP | OS: | Windows NT, 2000, XP, NT server, 2000 server |
| Software: | Filemaker Pro 5.5 (ITS Multi-User Version Only) | Software: | Filemaker Server 5.5 |

The above is the recommended minimum hardware requirements to install and operate the Intelligence Tracking System. An input device is only required if you plan on using the Intelligence Tracking System to manage your digital photographs. An output device is needed only if you plan to print.

If you have purchased a multi-user version of the Intelligence Tracking System, Filemaker Server 5.5 must be installed first. Please follow the installation process outlined from Filemaker before continuing the Intelligence Tracking System installation process.

To start the installation process, insert your Intelligence Tracking System Application CD into your CD-Rom drive. The screen shown in figure 1-A will be displayed automatically if your computer's CD-Rom drive has been configured to auto start. If you do not see figure 1-A automatically display, you will need to manually start the installation program. Select your Windows [Start Menu] and select [Run]. Select the [Browse] button, navigate to your CD-Rom drive and select the "Autoplay.EXE" file, select the [Open] button.

On this dialogue you are able to start the Intelligence Tracking System installer as well as other functions. Choose the [Install the Intelligence Tracking System] selection using your mouse. This will start the installer application.

The Intelligence Tracking System installer application starts with a welcome screen. After reading this screen, select the [Next]

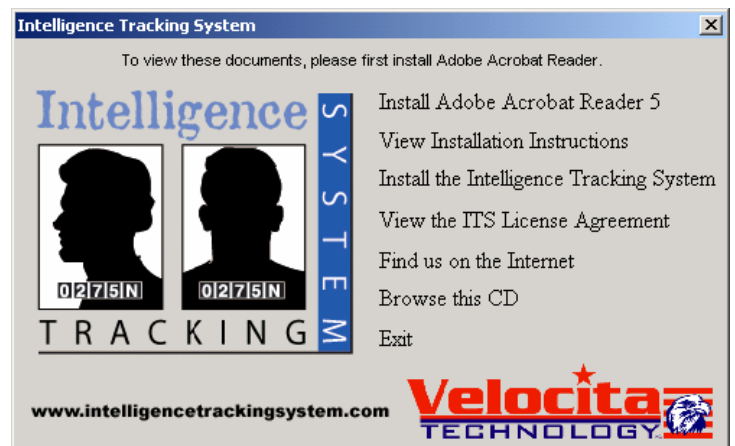


Figure 1-A

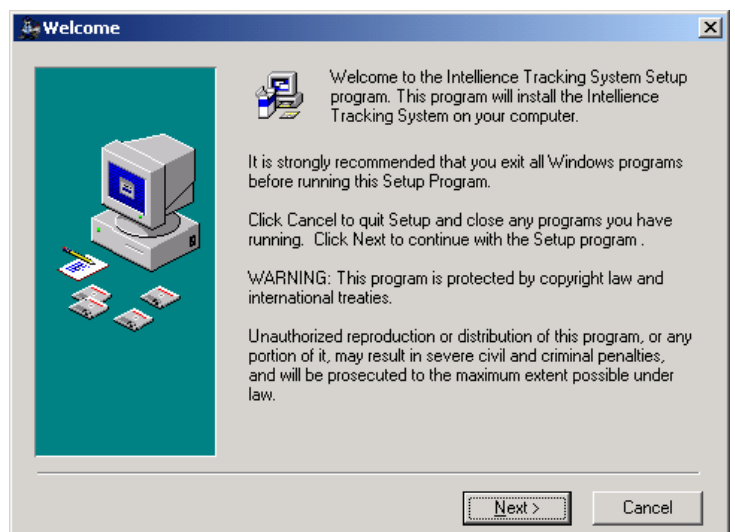


Figure 1-B

button. Next you will be asked to choose a location for the Intelligence Tracking System's application files. If this is the demonstration or single user version of the Intelligence Tracking System the default value "C:\GAS" should be used, select the **[Next]** button to continue. If you are installing the multi-user version of the Intelligence Tracking System you will need to change this value to one level below your Filemaker Pro Server folder. For example if you installed Filemaker Pro Server into the following location:

"C:\Program Files\Filemaker\Filemaker Server 5.5"

you would install the Intelligence Tracking System to:

"C:\Program Files\Filemaker\Filemaker Server 5.5\GAS".

After making this change please select the **[Next]** button to accept your selection. On the following screen you are asked if you would like to create a backup of any files overwritten during this installation process. The default value is to allow for the backup operation to take place, please select the **[Next]** button to accept this value. Next you are prompted to name the program group that the installer will place your Intelligence Tracking System application icons within. The default value "Intelligence Tracking System" is suggested, select the **[Next]** button to continue. You are now ready to begin the installation process. Select the **[Next]** button to start this process. The installer provides you with a progress screen, giving you the real time status of your install. If you are installing the Single or Multi user versions of the Intelligence Tracking System you will be prompted to insert your "Security Diskette" into your floppy diskette drive. When prompted please do so and

select the **[OK]** button to continue. Upon completion of this process you will be prompted to remove the "Security Diskette" and to select the **[OK]** button once again to

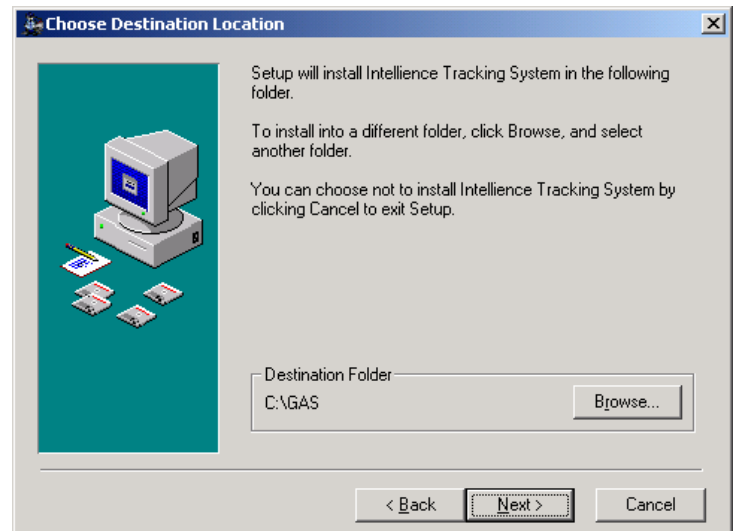


Figure 1-C

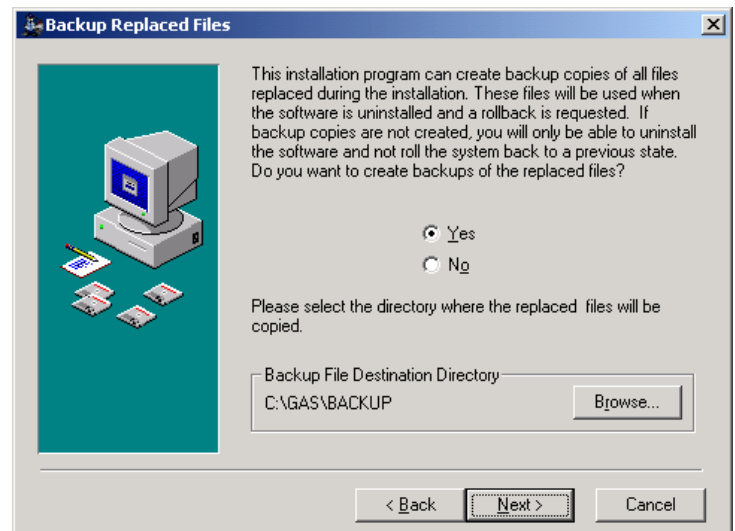


Figure 1-D



Figure 1-E

continue. Please do so when prompted. If this is a demonstration version you will not be prompted to perform this task, please skip to the next step. If the computer you are installing the Intelligence Tracking System on does not have Adobe Acrobat Reader installed, you will be prompted to complete Adobe's installer. If you have any questions regarding installing Acrobat Reader, please contact Adobe or visit Adobe's website at www.adobe.com. This completes the installation of the Intelligence Tracking System.

Before starting the Intelligence Tracking System for the first time your computer needs to be restarted. Please restart your computer now before continuing.

If you have purchased a multi-user version of the Intelligence Tracking System, the ITS Server Utilities need to be installed. Insert the ITS Server Utilities Diskette into your floppy diskette drive and start the install process by performing the following procedure. Select your Windows **[Start Menu]** and select **[Run]**. Select the **[Browse]** button, navigate to your Floppy drive and select the **"Setup.Exe"** file, select the **[Open]** button. This will start the ITS Server Utilities installer, its installer performs the installation automatically. You will be prompted that the installation was successful, once you have received this screen please close the window.

To configure your workstations in a multi-user environment please see the Intelligence Tracking System Multi User Workstation Setup document.